

The background image shows a park landscape at dusk or dawn. In the foreground, there are concrete steps and a grassy area. A series of tall, thin, vertical poles are spaced out across the middle ground. In the background, a large pavilion with a glass roof and metal frame is visible. Beyond the park, there is a body of water and a city skyline in the distance under a cloudy sky.

# Middle Harbor Shoreline Park Community Focus Group

Master Plan Updates

Feb 9, 2021



# Purpose of Meeting

Gather community input regarding current Park conditions and future planning for the Master Plan Update.

## Agenda

1. Introductions
2. Efforts to Date
3. Discussion
4. Next Steps

# Introductions

## Port of Oakland

## Gates + Associates - Landscape Architects & Planners

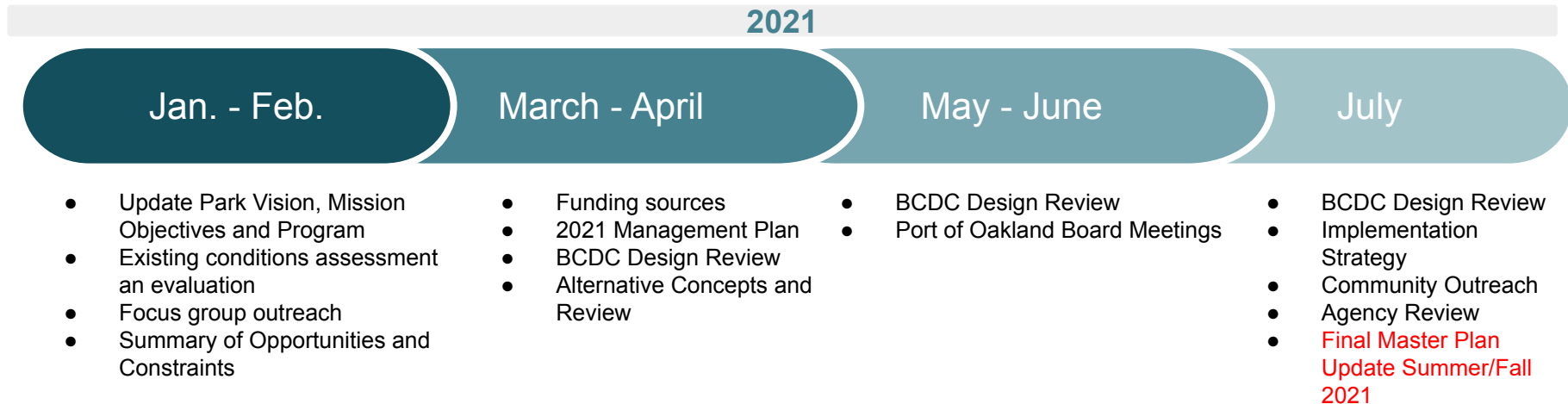
- Linda Gates
- Melonie O'Sullivan
- Michael Freitag

# Efforts to Date

- **Purpose of Update:**

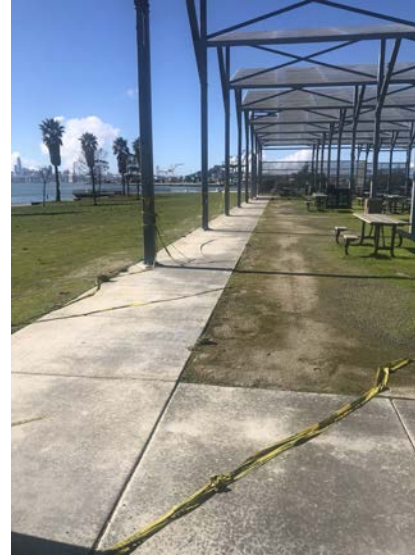
Assess the current park conditions and operations and develop a Master Plan for future use and improvements.

- **Timeline**



# Efforts to Date

- Existing Document Review
- Site Reconnaissance



# Discussion

## Has the Park satisfied the Master Plan goals? On a scale of 1-3 of each goal.

### Community Goals

- To have direct access to the shoreline and water for a range of activities.
- To create a place for learning about the natural environment, local history, maritime activities, and stewardship of the environment.
- To create an inviting place for a range of people with varying abilities, providing for both passive and active users.
- To emphasize the unique aspects of the site, shoreline, views, habitat, and maritime activity.

### Port of Oakland Goals

- To provide a long-term positive connection between the Port and the local community.
- To have a place for public science education programs, especially for students in elementary and middle school.
- To generate public awareness of the Vision 2000 Program, 50' dredging and habitat projects, and other maritime activities at the Port.
- To have the park actively used by the community, terminal employees, and regional public.
- To provide a park that supports and utilizes the adjacent Middle Harbor (Habitat) Enhancement Area.

# Discussion

1. Is the Park a valuable resource to the community and why? How could the Park be a better resource to the community?
2. What is your experience with the Park today? How do you use this resource?



# Discussion

1. What would be 1-3 things that you would change in MHSP?
2. What could make the park more successful?





# Discussion

1. What mode of transportation do you use to get to the Park?
2. Where do you see the park heading?



# Next Steps

- Future Focus Groups with Stakeholders
- Please reach out to Melonie O'Sullivan for additional input
  - [melonie@dgates.com](mailto:melonie@dgates.com)

An aerial photograph of a waterfront park and pier area. The park features a large green baseball field, several tennis courts, and a paved walkway. A pier extends into the water, with a blue-painted section at its end. In the background, a large industrial port area is visible, filled with shipping containers and cranes. The text "Thank You!" is overlaid in the center of the image.

# Thank You!

