

LAND USE SCENARIOS

Seaport Stakeholder Roundtable

December 15, 2021

10:00 AM-12:00 PM

AGENDA



1	Welcome & Introductions	Danny Wan, Executive Director, Port of Oakland Bryan Brandes, Director of Maritime, Port of Oakland
2	Seaport Framework Approach Vision & Mission	Bryan Brandes, Director of Maritime, Port of Oakland Richard Sinkoff, Environmental Programs & Planning, Port of Oakland
3	Planning Objectives for Seaport	Tracy Fidell, Port Planner/Scientist
4	Break	Dan Smith, Tioga
5	Seaport Planning Priorities Word Cloud Exercise	Dan Smith, Tioga
6	Seaport Planning Priorities Stakeholder Ranking	All
7	Next Steps Closing Comments Meeting Schedule	Bryan Brandes, Director of Maritime, Port of Oakland

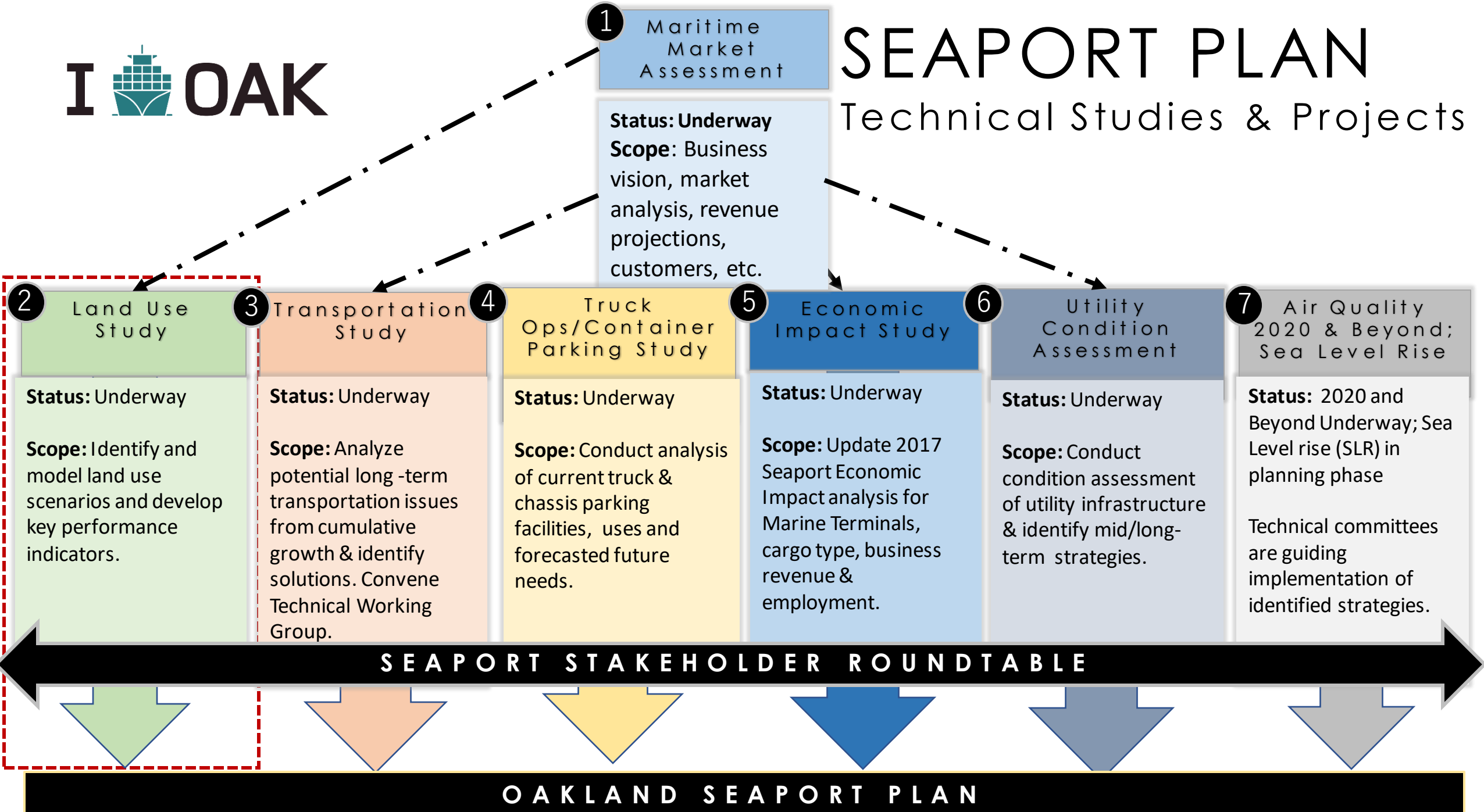


SEAPORT PLANNING
FRAMEWORK |
APPROACH
VISION & MISSION |

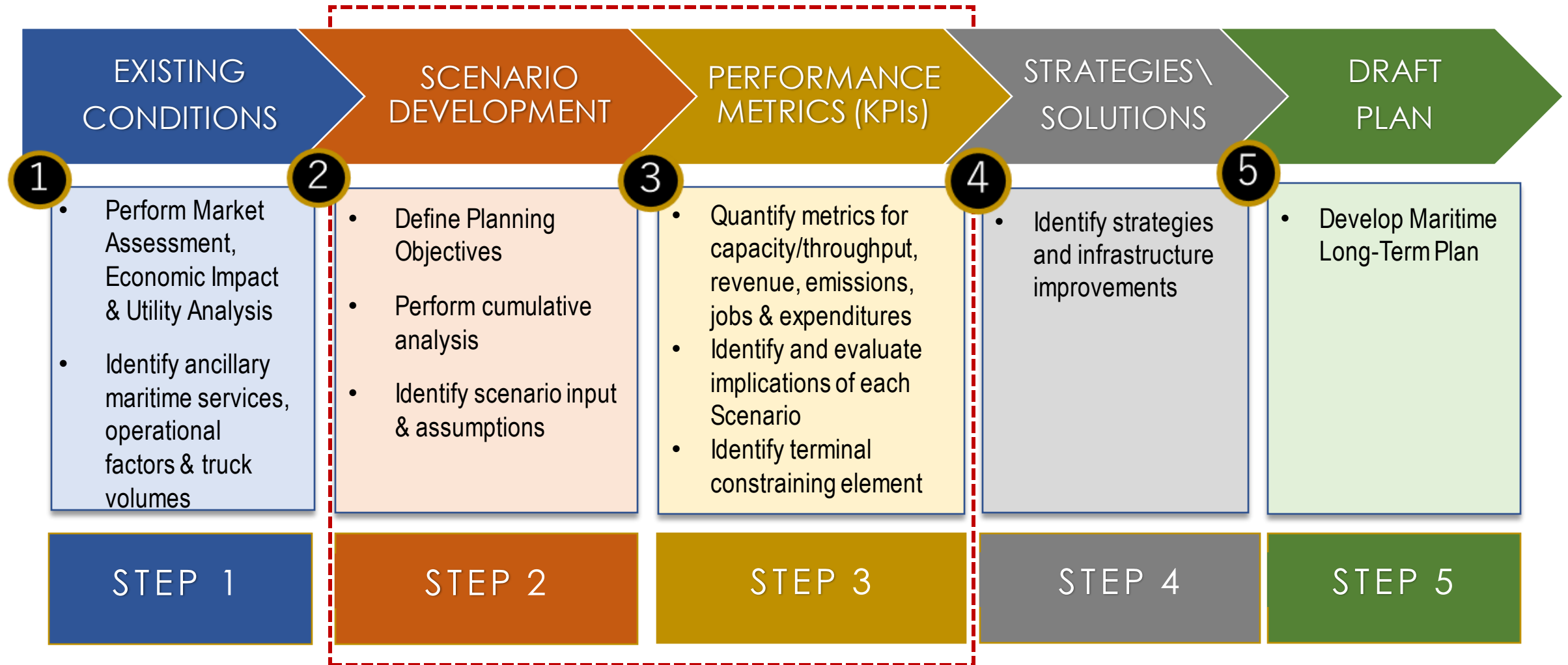


SEAPORT PLAN

Technical Studies & Projects



SEAPORT PLANNING APPROACH



SEAPORT VISION & MISSION

VISION

Port of Oakland will be a leader
in Maritime Commerce

MISSION

Promote sustainable, equitable and
smart Maritime logistics through
partnerships, policies & programs

Vision: The Port of Oakland is the
Preferred Gateway for Trade, Travel
and Recreation.

The Mission Statement reflects the business of the Port,
and our responsibility to care for our assets, our people
and our community.

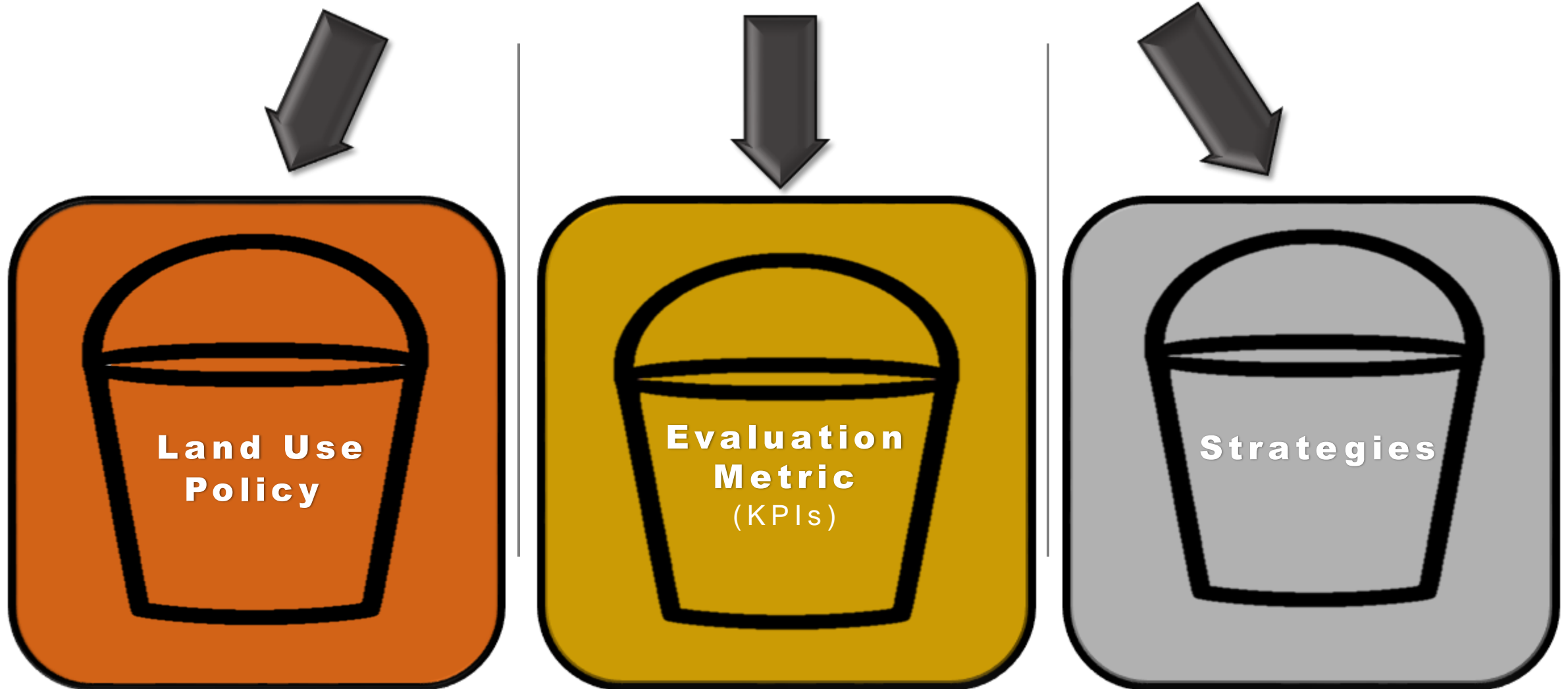
Mission: We are stewards of public
assets. We lead our seaport, airport
and commercial real estate
businesses in a fiscally sound and
socially beneficial way.

POTENTIAL GROWTH MARKETS I OAK

- Bulk (i.e., aggregates)
- Break Bulk (i.e., oversized cargo)
- RO/RO (i.e., vehicles)
- Containers
 - Exports
 - Imports
 - Refrigerated (“Reefer”)
 - Rail Cargo



DEFINE PLANNING OBJECTIVES





SEAPORT PLANNING OBJECTIVES

SEAPORT PLANNING OBJECTIVES

	Planning Objectives (no particular order)
a	Increase cargo diversity to better serve regional cargo needs
b	Increase public truck tractor/container/chassis parking to reduce truck operations in residential areas
c	Enhance Middle Harbor Shoreline Park
d	Be more aggressive on minimizing emissions (criteria pollutants & greenhouse gases) to reduce exposure to harmful pollutants and address climate change
e	Grow revenue more aggressively
f	Pursue rail cargo more aggressively to better serve regional cargo needs
g	Pursue more aggressive strategies to reduce truck queueing and idling on Port property
h	Pursue strategies that increase jobs
i	Better serve California agricultural exports
j	Better serve refrigerated cargo
k	Expand truck and driver service facilities
l	Increase physical and cyber security on Port property
m	Increase off-terminal empty container and chassis depot capacity
n	Other?
o	Other?
p	Other?

I  OAK

BREAK



PLANNING
OBJECTIVES

WORD CLOUD
EXERCISE



PLANNING
OBJECTIVES

RANKING
EXERCISE



NEXT STEPS |
PLANNING
MILESTONES |
CLOSING
COMMENTS |

PLANNING STUDY MILESTONES

PROPOSED TIMELINE	PROPOSED STUDY PLANNING MILESTONES
December 2021	<ul style="list-style-type: none"> • Land Use Study Preliminary Key Performance Indicators • Land Use Study Preliminary Seaport Land Use Scenarios
Jan/Feb 2022	<ul style="list-style-type: none"> • Transportation Study Preliminary Cumulative Analysis • Land Use Study Final Seaport Land Use Scenarios • Truck Operations & Truck/Container Parking Study Analysis & Findings
February 2022	<ul style="list-style-type: none"> • Economic Impact Study Preliminary Findings • Recommendations/Proposed Strategies
March 2022	<ul style="list-style-type: none"> • Draft Seaport Plan Outline/Overview

CLOSING COMMENTS

- Seaport Stakeholder Roundtable Documents

<https://www.portofoakland.com/stakeholderengagement/seaport-stakeholder-roundtable/>

- Next Meetings

Meeting #7	January 19, 2022
Meeting #8	February 23, 2022

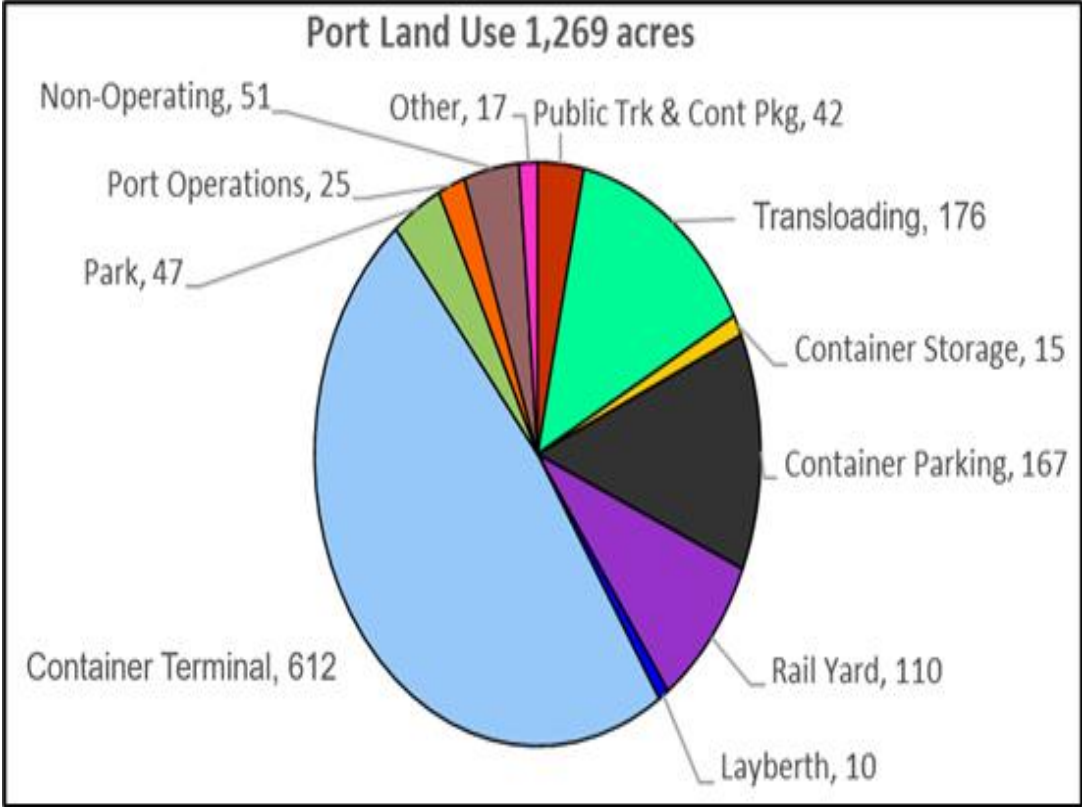
**All meetings occur from 10 am to 12 pm*

I  OAK

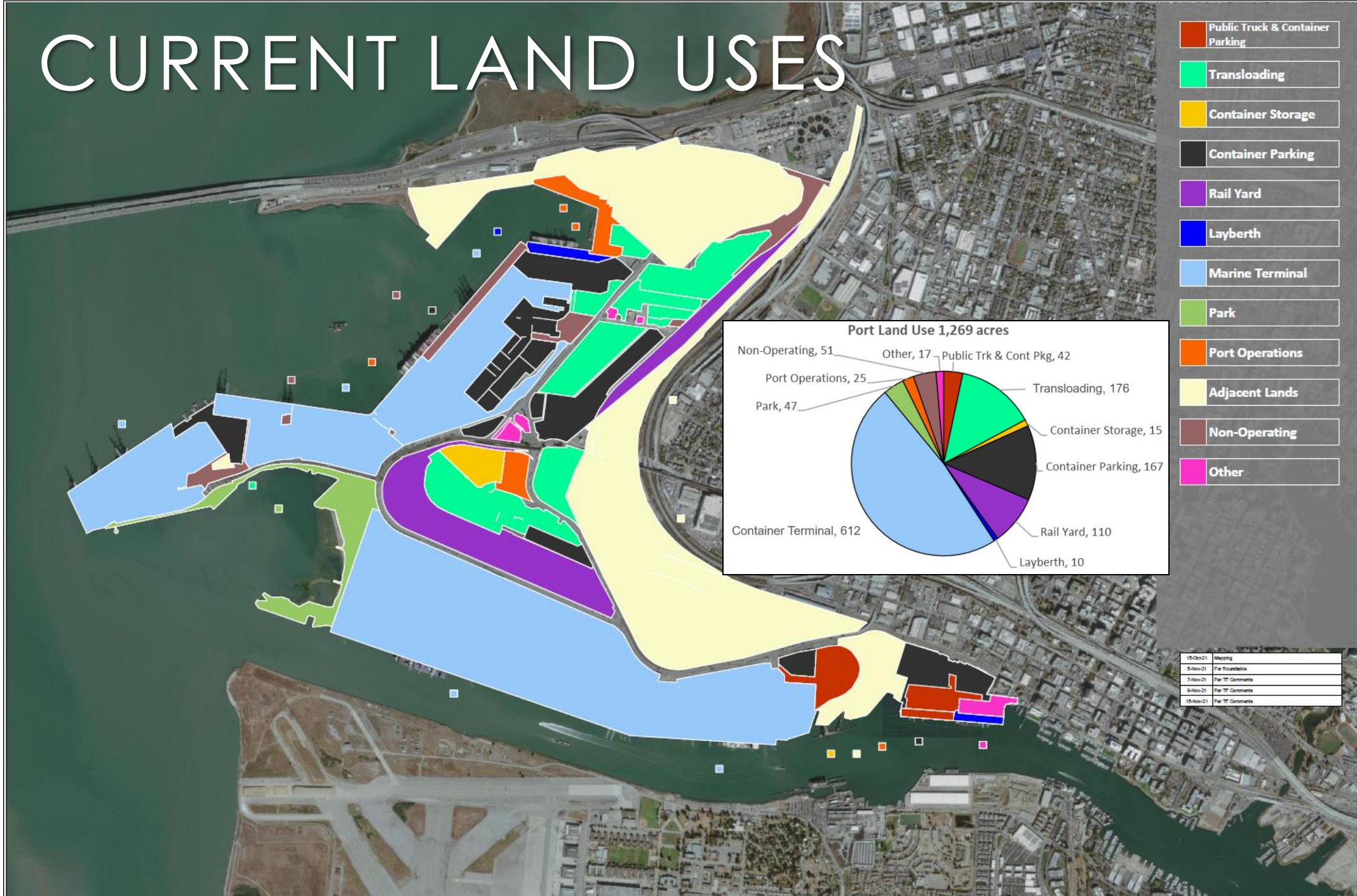
THANK YOU

CREATING LAND USE SCENARIOS

SCENARIO #1:	Container-Only
SCENARIO #2:	Diverse Cargo Types
SCENARIO #3:	Increased Rail via On-Dock Yards
OTHER VARIATIONS?	Fill Berth 21, Acquire More Land, Rail Transload



CURRENT LAND USES



EVALUATING SCENARIOS: “KPIs”

Quantitative

- Revenue
- Jobs
- Emissions
- Percent by rail
- Truck trips
- Capital Expenditure
- Other?

Qualitative (low, medium, high)

- Human services
- Connectivity to regional highway & rail network
- Other?

BASELINE = Existing Conditions
at Capacity