

ASTHMA & CUMULATIVE HEALTH RISKS IN WEST OAKLAND

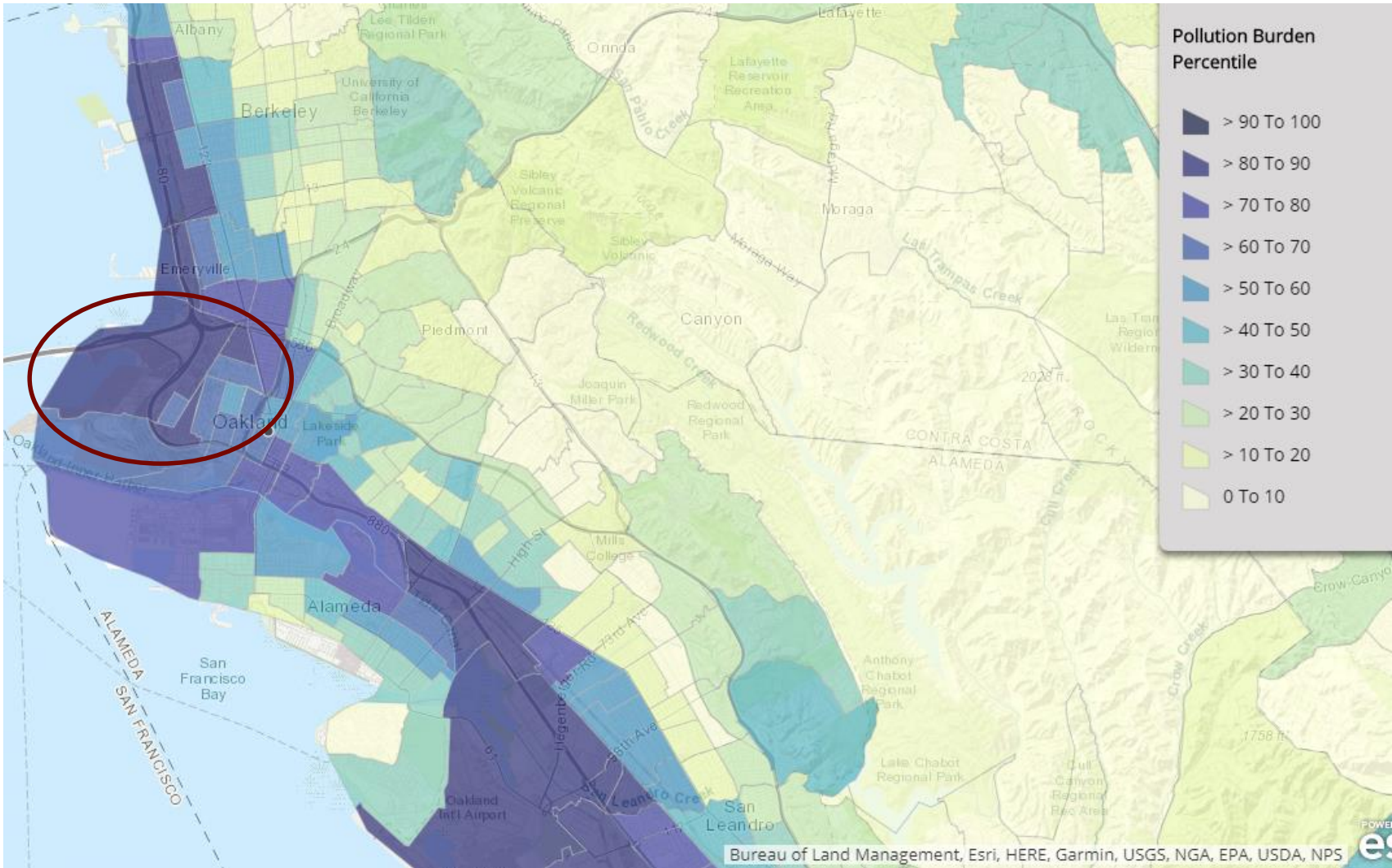
“MAQIP 2018 Update”

Port of Oakland Maritime Air Quality Improvement Plan (MAQIP) Task Force – Meeting #1
Oakland, California
Feb 23, 2018



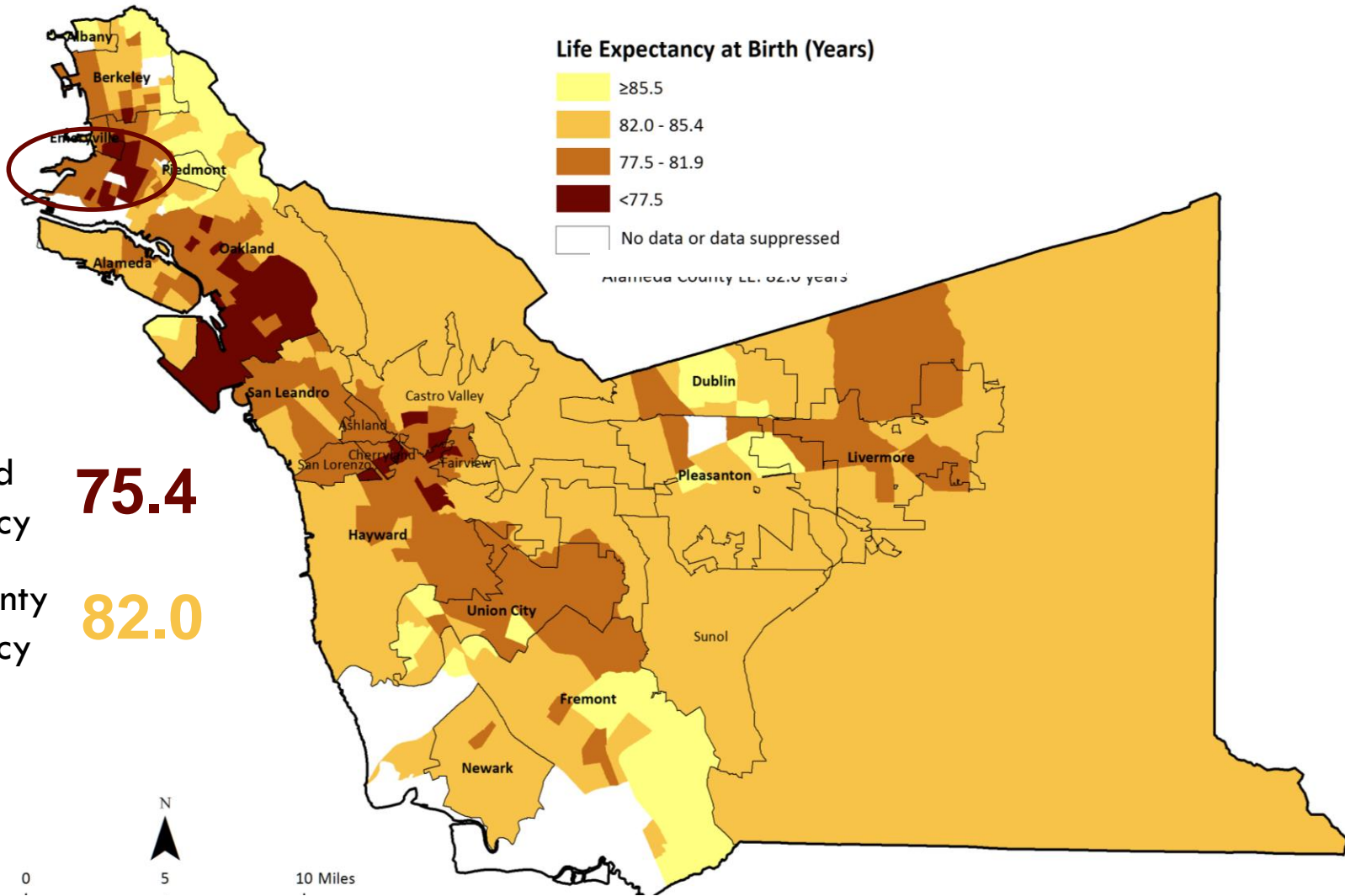
Muntu Davis, MD, MPH
Alameda County Health Officer

W. Oakland experiences high levels of air pollution from the highways, the Port, & numerous industrial facilities in close proximity to residents.



Source: OEHHA, CalEnviroScreen 3.0

Due to these cumulative health risks, life expectancy is 6.6 years less in areas in W. Oakland compared to the County.



Source: CAPE, with data from Alameda County vital statistics files, 2011-2015.

That difference increases to 14 years when comparing African Americans in W. Oakland to Whites in the Oakland Hills.

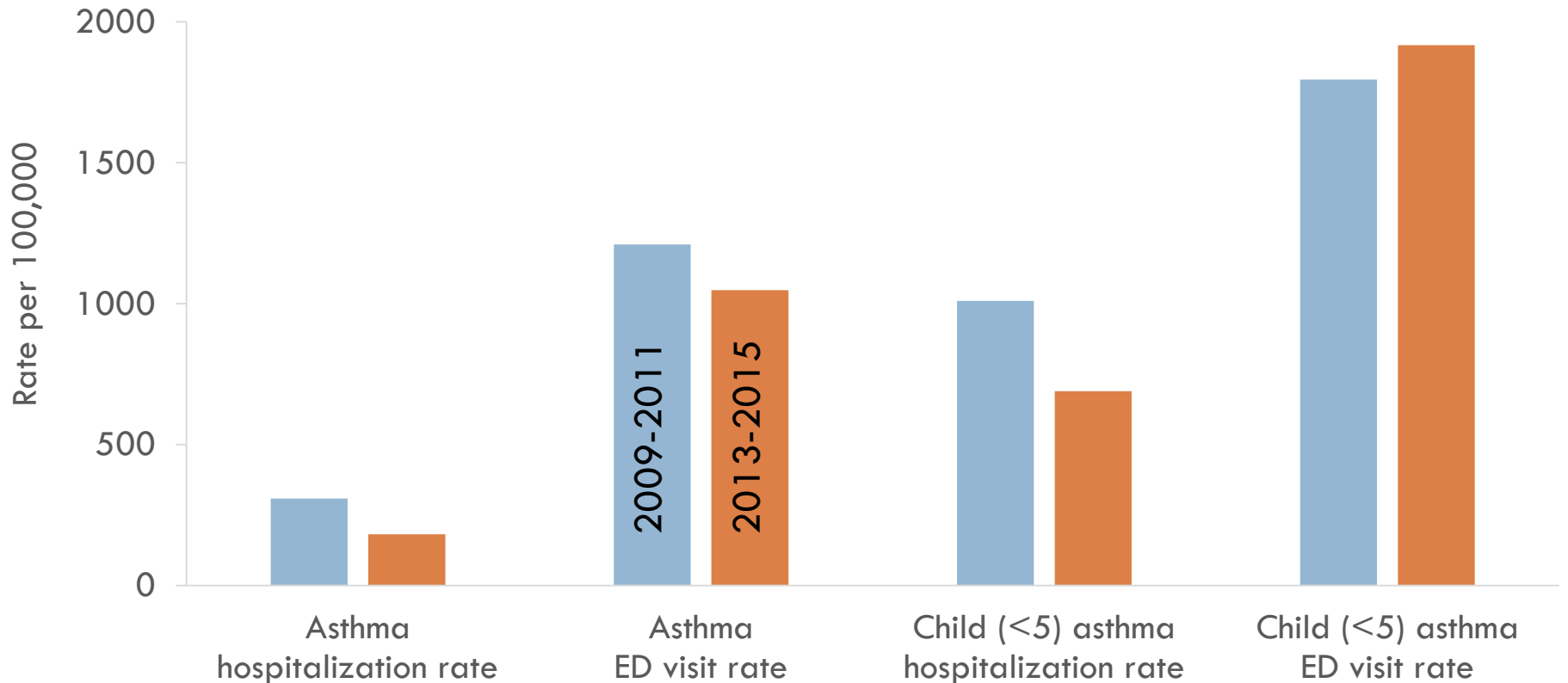
LIFE EXPECTANCY OF
WHITES IN OAKLAND HILLS **85**

LIFE EXPECTANCY OF
AFRICAN AMERICANS
IN WEST OAKLAND **71**

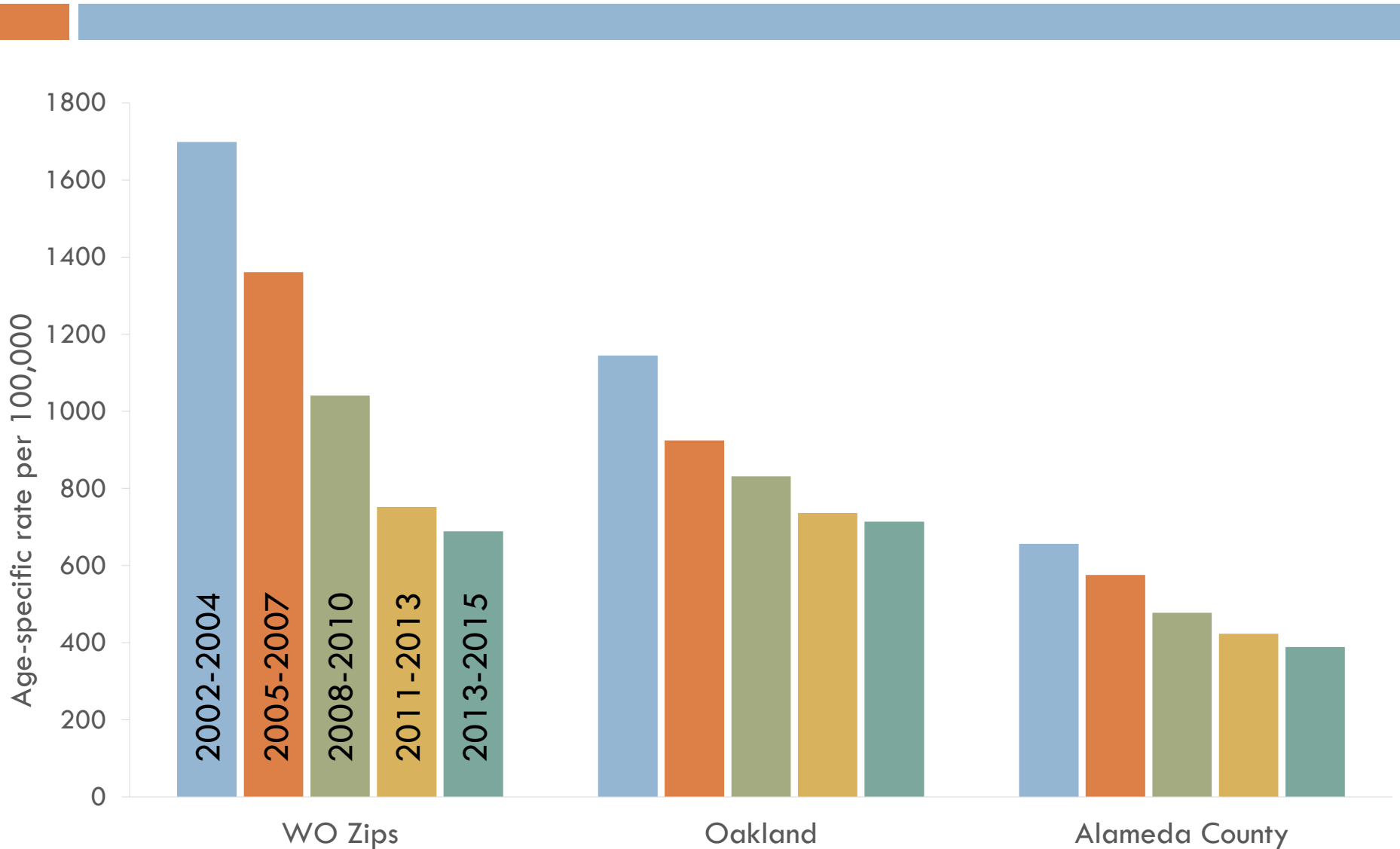


Source: Alameda County Vital Statistics files, 2013-2015
Photo Source: The California Endowment, *Health Happens Here*

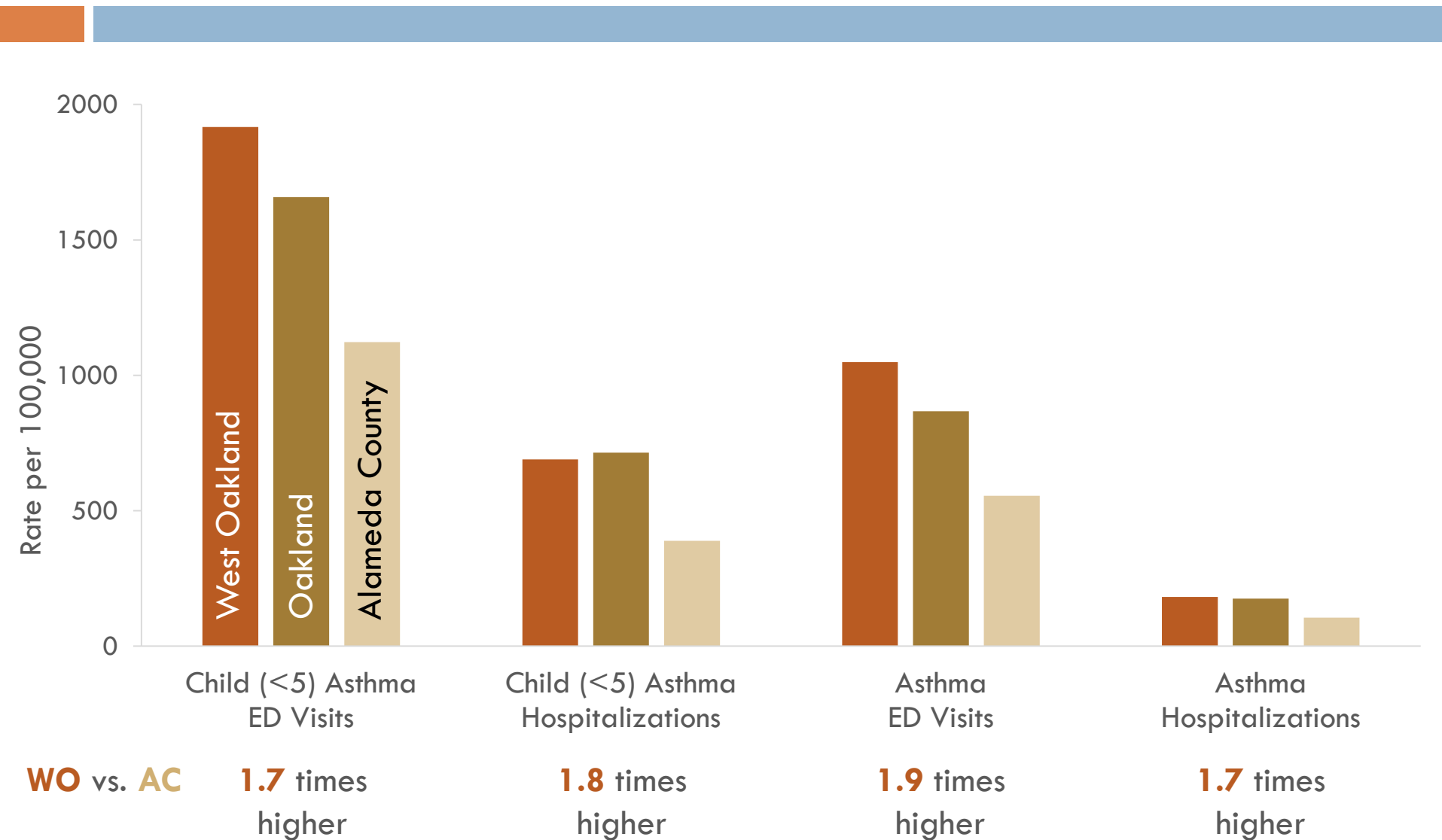
Child asthma emergency department visit rates went up, despite decreases in hospitalizations in West Oakland.



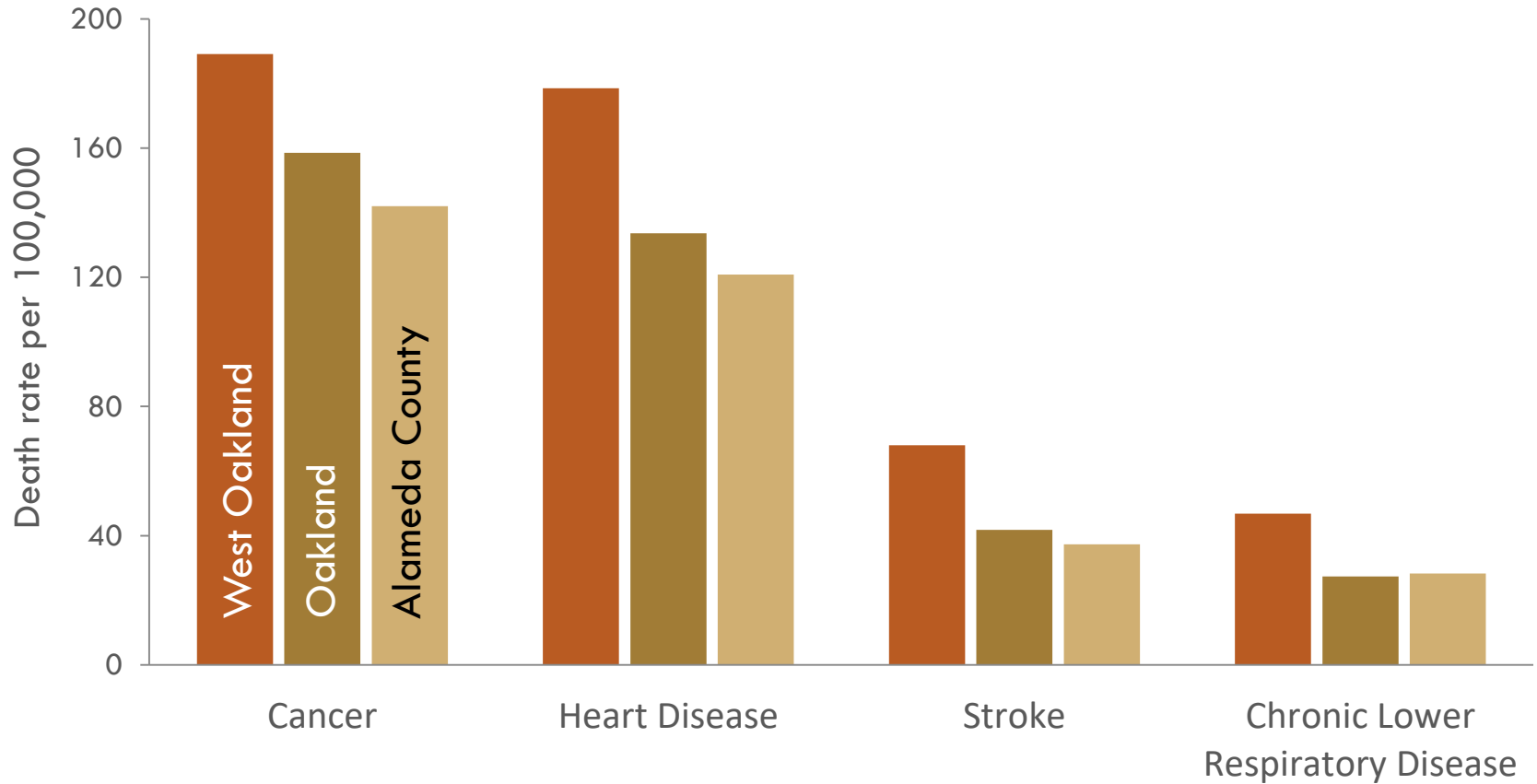
Child (<5 years old) asthma hospitalizations have been decreasing, even prior to implementation of diesel regulations.



In terms of asthma outcomes, West Oakland continues to be heavily burdened compared to the rest of the county.



West Oakland residents are dying at higher rates from other health issues associated with air pollution.

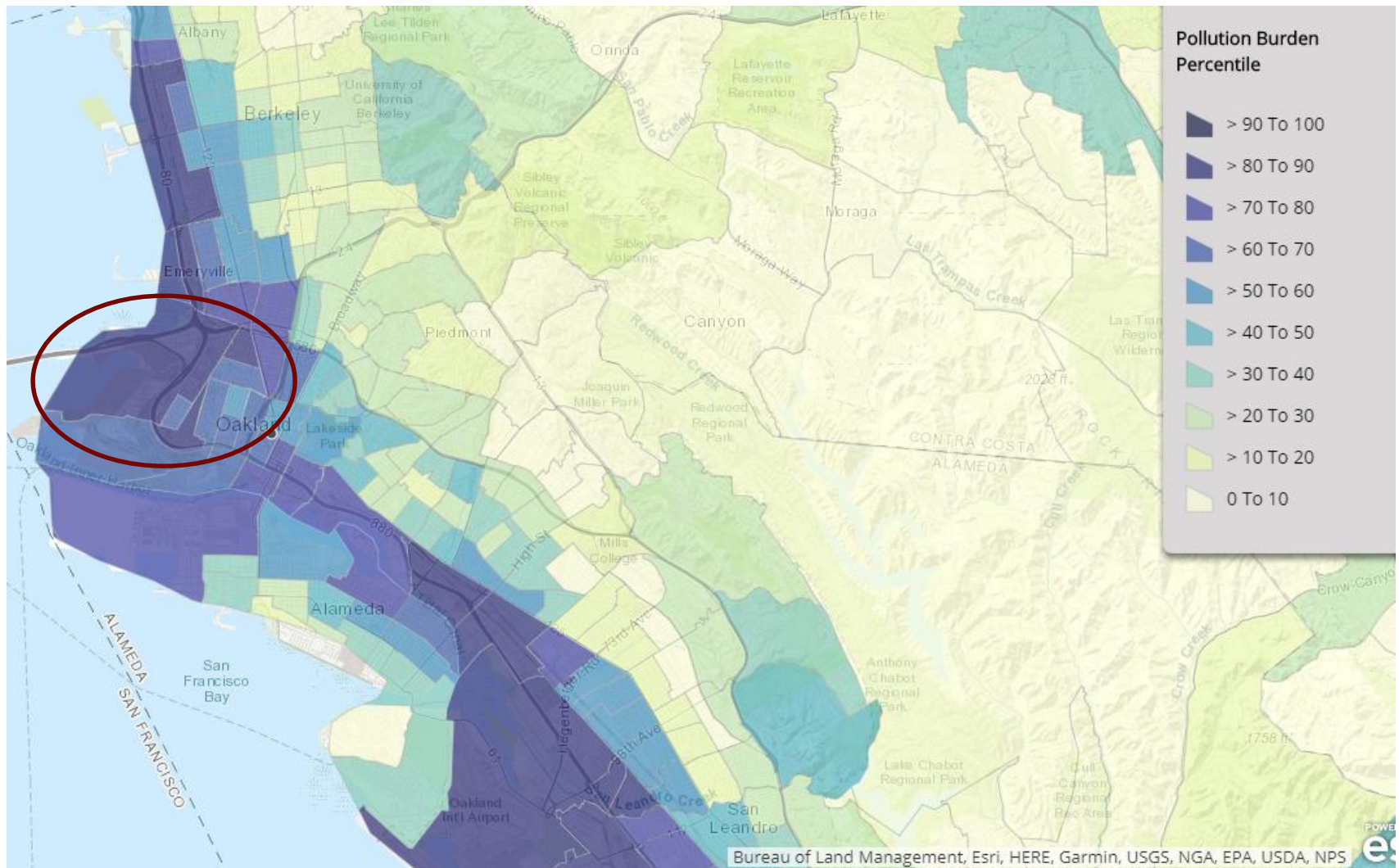


WO vs. **AC** **1.3** times higher **1.5** times higher **1.8** times higher **1.7** times higher

West Oakland also experiences numerous social and economic factors that compound the risks from pollution.

- Long-standing community disinvestment
- Very high & persistent poverty
- Gentrification & displacement
- Community of color
 - ▣ Impacted by the long-term effects of institutional & environmental racism

To alleviate this burden, each source of pollution must routinely take steps to minimize its contribution.



Thank you! For questions or more info, please contact us...



Anna Lee

Local Policy Coordinator, Place Matters
Alameda County Public Health Department
anna.lee@acgov.org

Sandi Gálvez

Director, Health Equity, Policy, & Planning
Alameda County Public Health Department
sandi.galvez@acgov.org

Muntu Davis, MD, MPH
Alameda County Health Officer
muntu.davis@acgov.org