



GENERAL NOTES


1. THIS CONCEPTUAL DESIGN IS PRELIMINARY AND SUBJECT TO CHANGE DURING FURTHER PROJECT DEVELOPMENT AND DESIGN

2. DETAILED DESIGN TO COMPLY WITH THE PORT OF OAKLAND'S LAND USE DEVELOPMENT CODE

**Port Permit #5832    November 14, 2023**

The Permit for the work described in these plans has been approved by the Port of Oakland under its land use authority as granted by the Charter of the City of Oakland. The Applicant is approved to obtain other required permits and proceed with the work.

*Joe Marsh*  
**Joe Marsh, Port Permit Coordinator**



PROJECT FOR

**FORM ENERGY**

**BATTERY ENERGY STORAGE SYSTEM R&D SITE**

**7700 EDGEWATER DRIVE OAKLAND, CA 94621**

|      |            |                   |
|------|------------|-------------------|
| A    | 05/21/2023 | CONCEPTUAL LAYOUT |
| MARK | DATE       | DESCRIPTION       |

|                |            |
|----------------|------------|
| PROJECT NUMBER | X          |
| ORIGINAL ISSUE | 05/21/2023 |

|                     |              |
|---------------------|--------------|
| PROJECT MANAGER     | ANDREW RAPIN |
| PROJECT DESIGNER    |              |
| PROJECT ARCHITECT   |              |
| LANDSCAPE ARCHITECT |              |
| CIVIL ENGINEER      |              |
| STRUCTURAL ENGINEER |              |
| MECHANICAL ENGINEER |              |
| ELECTRICAL ENGINEER |              |
| INTERIOR DESIGNER   |              |
| EQUIPMENT PLANNER   |              |
| WAYFINDING          |              |
| DRAWN BY            | ANDREW RAPIN |

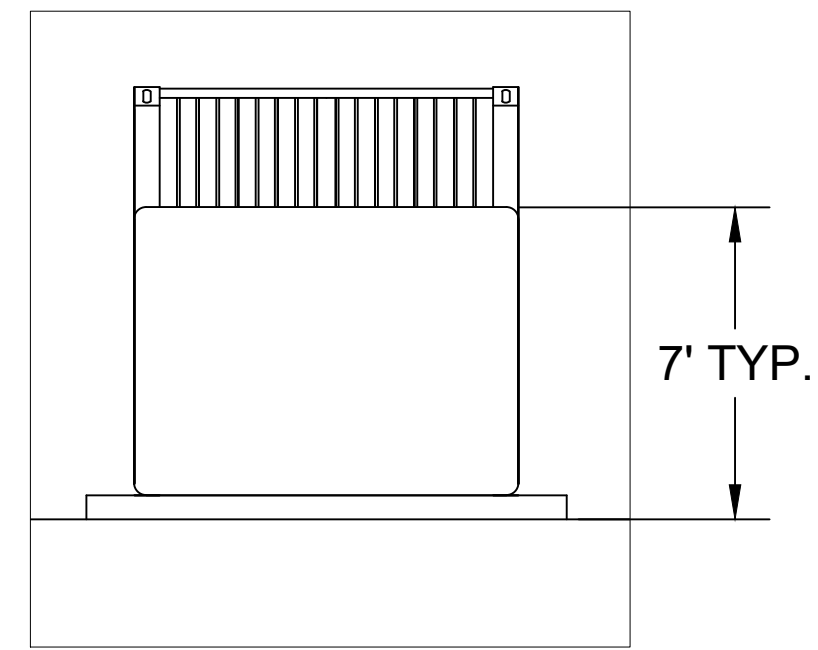
SHEET NAME

SCALE 1:30

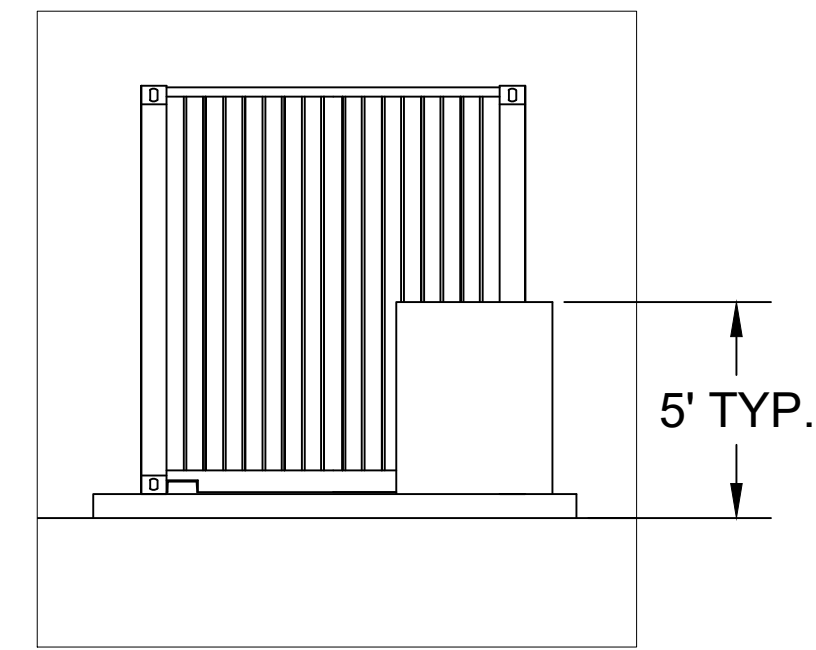
SHEET NUMBER

FILE NAME 7700 EDGEWATER\_PRELIMINARY LAYOUT.DWG

CONCEPTUAL LAYOUT



FRONT VIEW - BOP EQUIPMENT



REAR VIEW - BOP EQUIPMENT

- ### GENERAL NOTES

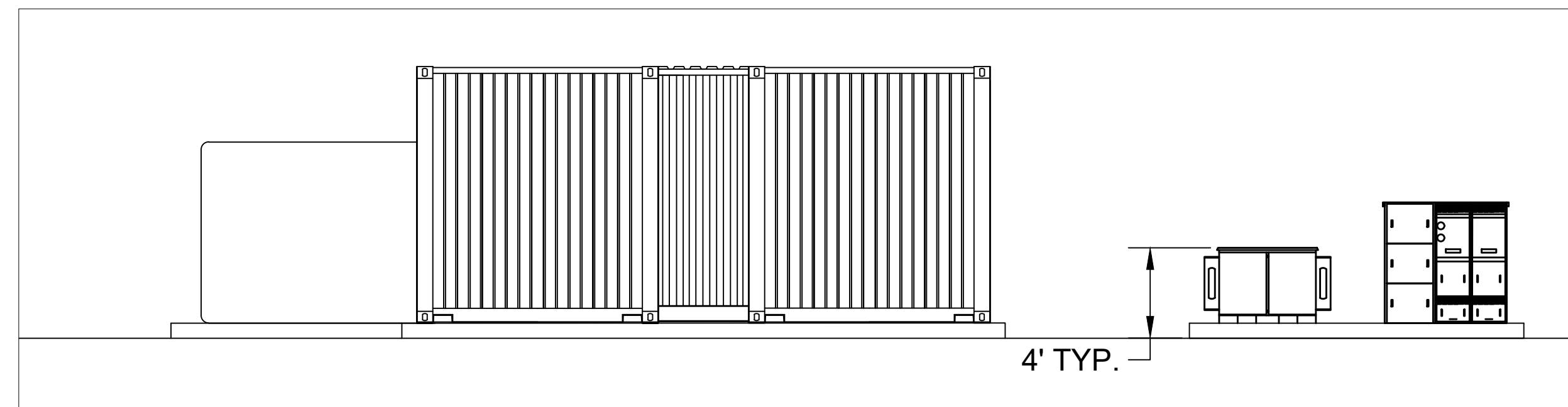
1. THIS CONCEPTUAL DESIGN IS PRELIMINARY AND SUBJECT TO CHANGE DURING FURTHER PROJECT DEVELOPMENT AND DESIGN
2. DETAILED DESIGN TO COMPLY WITH LOCAL CODES AND STANDARDS
3. 6' CHAIN LINK FENCE NOT SHOWN



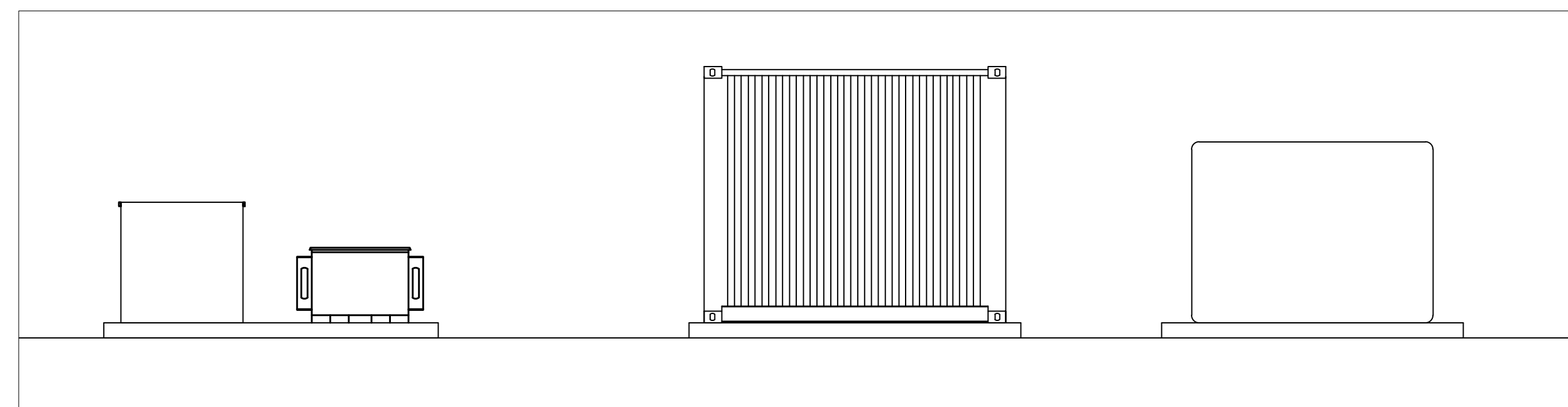
PROJECT FOR

## FORM ENERGY

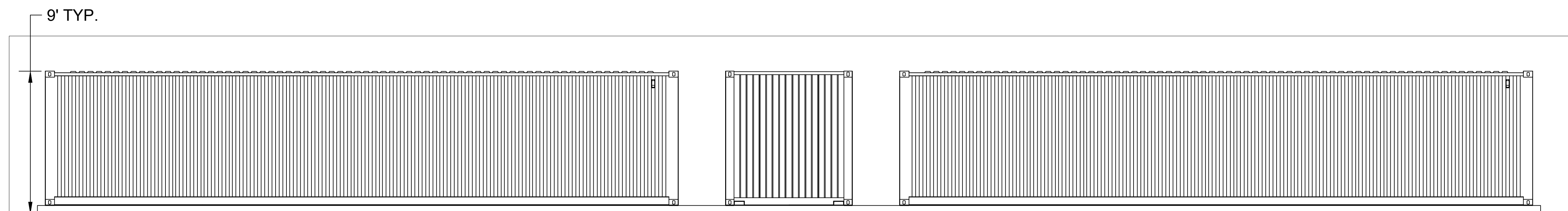
**BATTERY ENERGY  
STORAGE SYSTEM  
R&D SITE**  
**7700 EDGEWATER DRIVE**  
**OAKLAND, CA 94621**



LEFT SIDE VIEW



LEFT SIDE VIEW



FRONT AND REAR VIEW - FORM R&D EQUIPMENT

|      |            |                |
|------|------------|----------------|
| A    | 07/09/2023 | ORIGINAL ISSUE |
| MARK | DATE       | DESCRIPTION    |

|                |            |
|----------------|------------|
| PROJECT NUMBER | X          |
| ORIGINAL ISSUE | 07/09/2023 |

|                     |              |
|---------------------|--------------|
| PROJECT MANAGER     | ANDREW RAPIN |
| PROJECT DESIGNER    |              |
| PROJECT ARCHITECT   |              |
| LANDSCAPE ARCHITECT |              |
| CIVIL ENGINEER      |              |
| STRUCTURAL ENGINEER |              |
| MECHANICAL ENGINEER |              |
| ELECTRICAL ENGINEER |              |
| INTERIOR DESIGNER   |              |
| EQUIPMENT PLANNER   |              |
| WAYFINDING          |              |
| DRAWN BY            | ANDREW RAPIN |

SHEET NAME

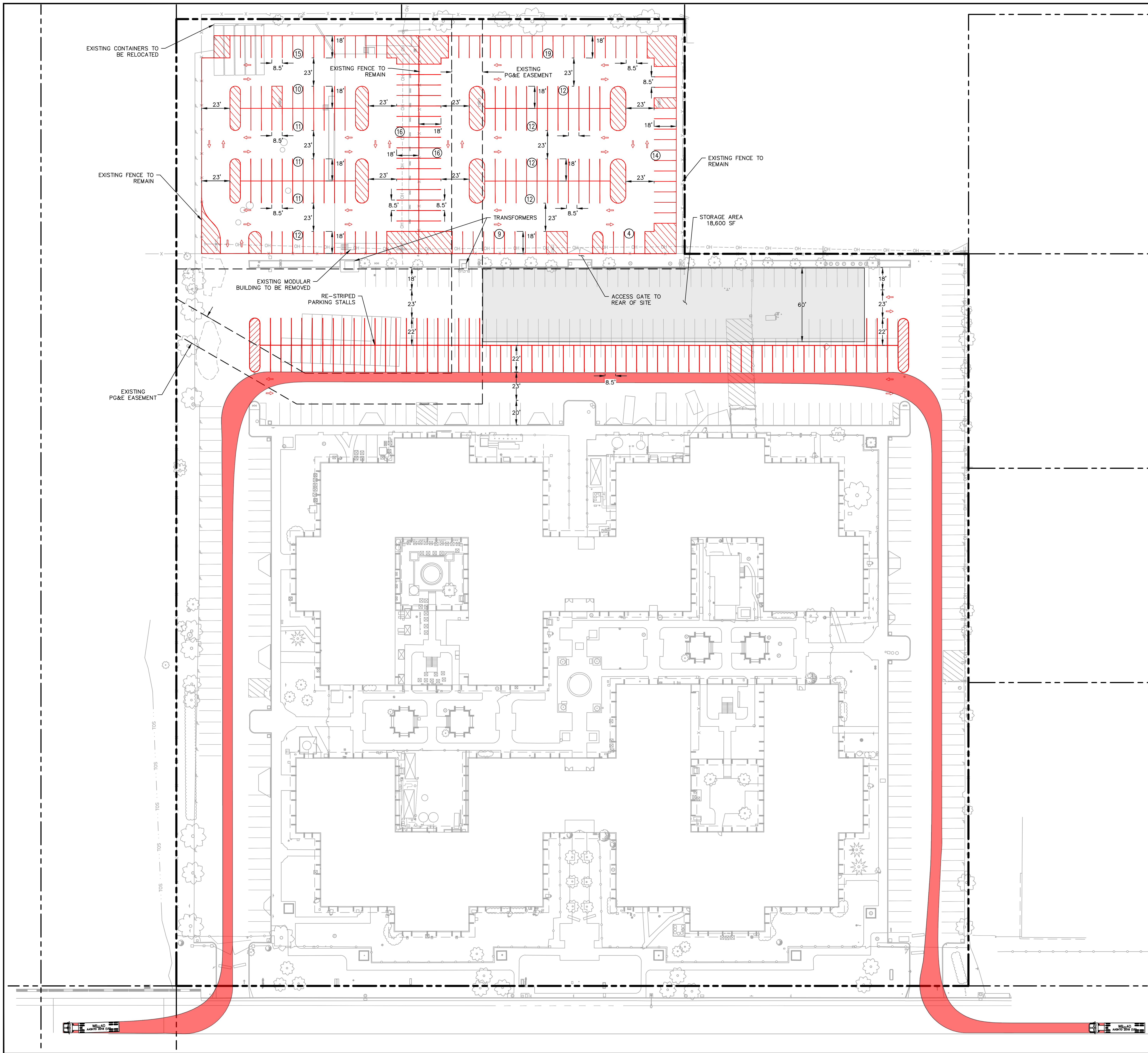
SCALE                      3" = 1'

SHEET NUMBER

|           |                                       |
|-----------|---------------------------------------|
| FILE NAME | 7700 EDGEWATER_SITE PLAN_20230709.DWG |
|-----------|---------------------------------------|

## ELEVATIONS



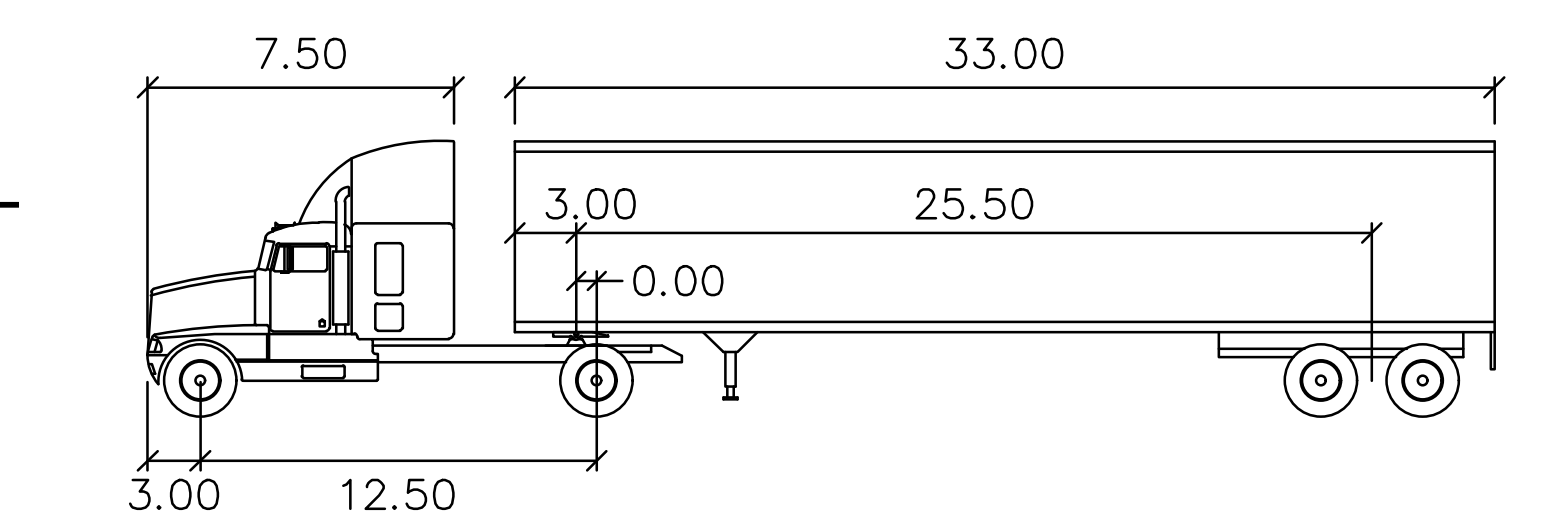


**LEGEND:**

- — — — — PROPERTY LINE
- - - - - EASEMENT LINE

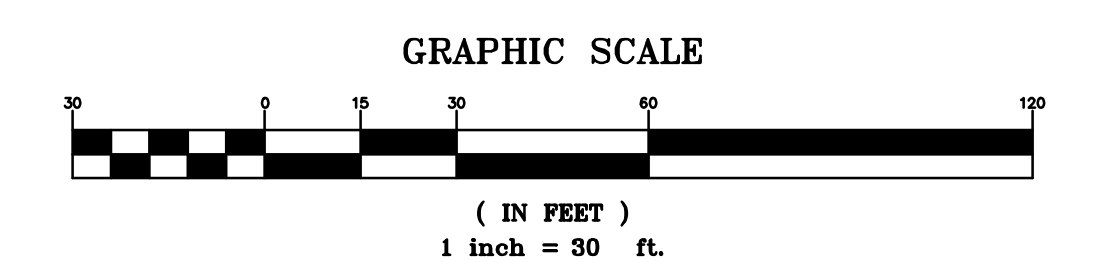
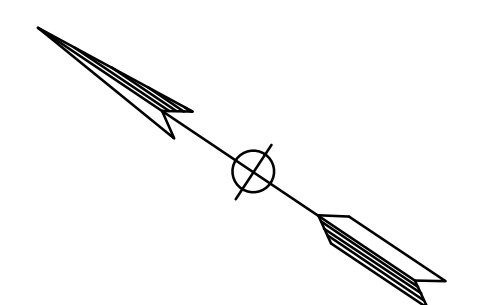
**PARKING STALL COUNT:**

- EXISTING PARKING STALLS: 358
- PARKING STALLS REMOVED: 143
- PARKING STALLS ADDED: 281
- REMAINING PARKING STALLS: 496



WB-40

|               |        |                    |        |
|---------------|--------|--------------------|--------|
|               | feet   |                    |        |
| Tractor Width | : 8.00 | Lock to Lock Time  | : 6.0  |
| Trailer Width | : 8.00 | Steering Angle     | : 20.3 |
| Tractor Track | : 8.00 | Articulating Angle | : 70.0 |
| Trailer Track | : 8.00 |                    |        |



**VEHICLE MANEUVERS**  
7700 EDGEWATER DRIVE  
CITY OF OAKLAND  
JULY 2023

PREPARED BY  
**BKF** **BKF ENGINEERS**  
2100 FRANKLIN STREET  
SUITE 4C  
OAKLAND, CA 94612  
(510) 899-7300  
www.bkf.com