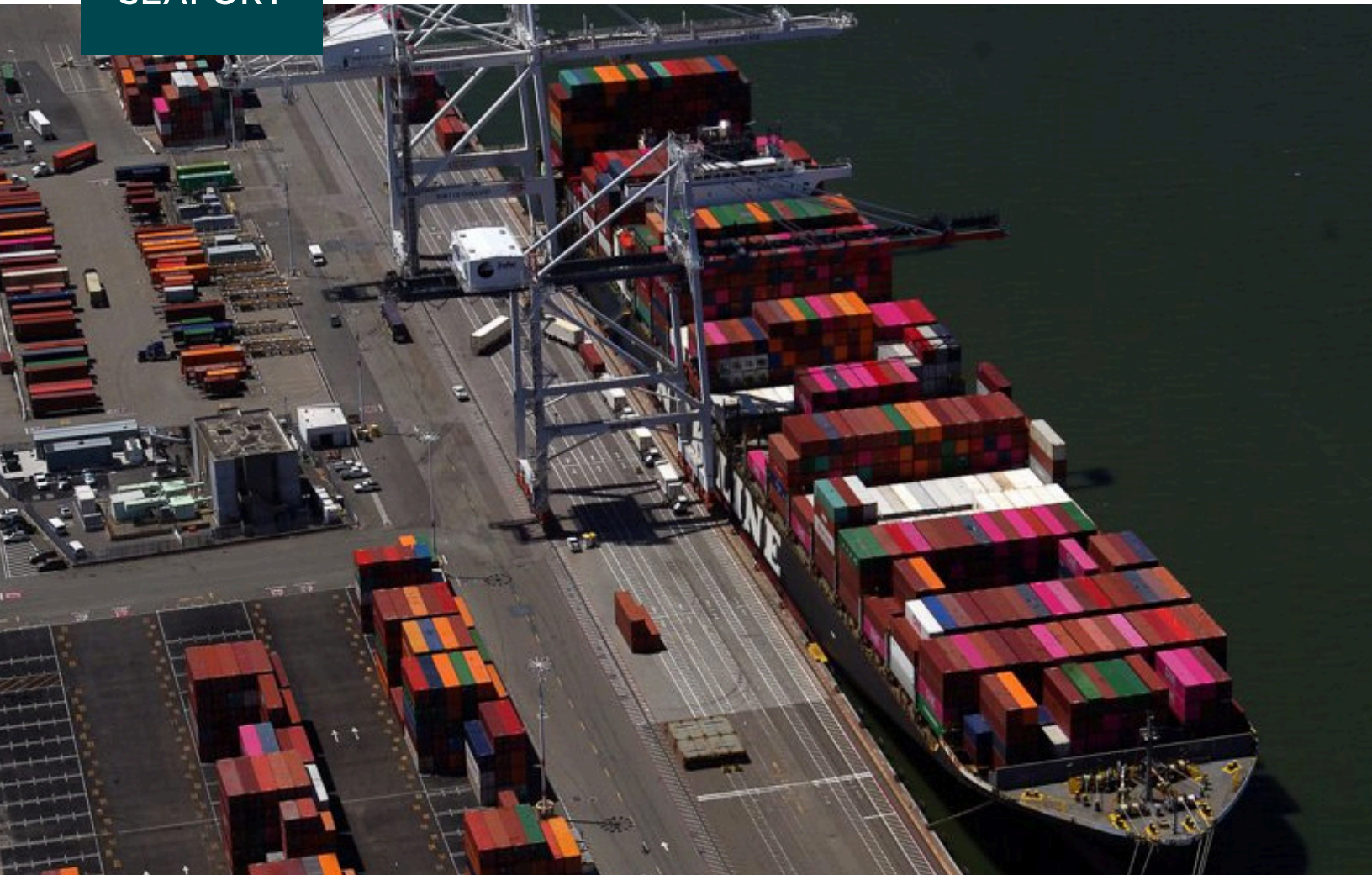




**PORT OF OAKLAND
SEAPORT**

JULY 2021

MARITIME e-NEWS



Port of Oakland cargo volume spiked 11.4% in first half '21

Port of Oakland first half 2021 total cargo volume increased 11.4 percent over 2020 and forecasters envision no letup. The Port handled the equivalent of 1.3 million 20-foot containers in the past six months. If the pace holds, the Port's year-end volume would surpass 2.6 million containers for the first time.

"We've never seen this level of activity and based on the outlook we're preparing for more," said Port of Oakland Maritime Director Bryan Brandes. "Our challenge is serving customers who expect us to handle their cargo efficiently."

A year-long boom in containerized U.S. imports is driving record business. The Port said the trend should continue based on three factors:

- Record freight rates indicating high demand for vessel space;
- Strong consumer spending on goods manufactured overseas; and

continues on page 4

Port Board gives President Cluver second term

The Port of Oakland's governing Board has given Andreas Cluver a second term as President. The seven-member Oakland Board of Port Commissioners unanimously selected the East Bay labor leader at a special mid-July, meeting.

Mr. Cluver begins a second one-year term next month after first gaining the presidency in July 2020. Commissioner Barbara Leslie will remain as First Vice President and Commissioner Yui Hay Lee will remain as Second Vice President for a second term. Their re-elections signal stability at the Port as it re-emerges from the global pandemic.

"I'm gratified to have the support of my colleagues for



*Andreas Cluver
Port Board President*

continues on page 3

Zero-emissions truck project launches at Port

Sub-head: Port builds electric charging stations for battery electric trucks

The Port of Oakland and its logistics partners launched a battery electric truck demonstration project this month on its path to zero emissions at the Oakland Seaport. The Port debuted ten new battery electric trucks at Shippers Transport Express (STE), a Port-based trucking operation. The Peterbilt trucks cost a total of \$5.1 million and are used to haul cargo within the Port's maritime area. Funding for the trucks comes from a ZANZEFF grant (Zero And Near-Zero-Emission Freight Facility program).

"Getting these cleaner-running and quieter trucks into service is a major step in testing the feasibility of battery electric trucks moving containers," said Port of Oakland Maritime Director Bryan Brandes. The demonstration project will take approximately three months.

The Port invested \$1.7 million to construct 10 electric charging stations at STE. The Port also built a new electrical substation and power line extension to connect to the charging stations. These construction projects took about two years to complete and advance the Port's plan for reducing emissions from Oakland Seaport sources.



The Port's monetary and construction commitments served as a grant funding match for the electric truck demonstration project. Additionally, this project is a "Near Term Action" in the

continues on page 4

Port of Oakland looks past pandemic and plans for future

Infrastructure improvements coming to airport and seaport



*Danny Wan
Port of Oakland
Executive Director*

As pandemic restrictions ease, the Oakland Seaport is bursting at the seams with record cargo volume. The traveling public is returning to Oakland International Airport for business and leisure travel, although passenger activity is not yet at pre-pandemic levels. Despite uncertainties, the Port of Oakland (Port) intends to improve its long-term operations by planning for its future business and infrastructure needs. The Port's business lines include Oakland International Airport (OAK) and the Oakland Seaport.



*Bryan Brandes
Port of Oakland Director
of Maritime*


Port of Oakland Executive Director Danny Wan began a Bay Area Council meeting on Port economics this month, commenting to the business audience that the container ships anchoring in the San Francisco Bay bring public attention to the fact that the Port impacts everyone. Vessel calls are delayed at major ports around the world including Oakland because unprecedented cargo volume has strained the global supply chain.

SSA Marine Client Services Manager Susan Ransom works at Oakland International Container Terminal (OICT) which moves about 60-70% of the containerized cargo at the Oakland Seaport, "We turn about 15-20 ships a week...and have invested millions and millions of dollars in the largest cranes." Ms. Ransom remarked, "We're very bullish on Oakland and are growing our volume here." Cargo moving through OICT includes medical supplies, furniture, appliances, fitness equipment, and household goods.

Seaport planning and improvements:

- Additional ILWU workers are being trained and joining the workforce at the Port to handle the cargo surge and future cargo growth
- Planning - The Port will conduct a land use study, transportation study, and an electrical infrastructure study (to support its Seaport path to zero emissions)
- Three of the tallest container cranes at Oakland became operational in spring at OICT
- Everport Terminal Services bought a new crane that will be operational this summer
- The Port is facilitating a battery electric truck demonstration project and built ten new electric charging stations to power the experimental trucks
- A new 466,000 square-foot warehouse at the Port is complete and ready for business
- Freight Intelligence Transportation System - a suite of 15 demonstration technology projects along or near roadways leading in and out of the Port has begun
- Strategic planning is underway for the Port of Oakland Maritime Division to guide the division for its long-term, future growth




continues on page 3



COVID 19— Your actions save lives

Stay healthy: wear a mask, wash your hands, stay home if you're sick, and keep your distance.
Useful links:

- **CA Industry guidance**
<https://covid19.ca.gov/industry-guidance/#top>
- **CA Counties information**
<https://covid19.ca.gov/roadmap-counties/>
- **CA COVID-19 testing**
<https://covid19.ca.gov/testing-and-treatment/#top>





Airlines have suffered huge losses during the pandemic but with vaccinations rolling out, people are choosing to fly more often this summer.

“The last 60 days has been unbelievable,” said Southwest Business Vice President David Harvey of Southwest Airlines, the Port’s largest tenant at OAK. “We’ve been adding flight destinations at Oakland and look forward to continuing to grow our business at Oakland International.” Southwest Airlines handles about 75-80% of the passenger traffic at OAK.

Port of Oakland Aviation Director Bryant L. Francis said much has changed for the better regarding air travel in 2021, “The Airport is experiencing strong growth in passenger activity, seeing an average of 75-80% of pre-pandemic traffic daily, which is the highest of any Bay Area airport.”

OAK planning and improvements:

- OAK has resumed numerous customer experience enhancements throughout the terminal facility
- Airlines are adding new routes
- Airlines are increasing the frequency of flights on existing routes
- OAK’s Food and Beverage partners are advancing construction on several dining establishments located in both Terminals 1 and 2 to open by year-end 2021

- Port staff is examining terminal capacity for post-pandemic air travel to accommodate an expected increase in demand from East Bay residents and visitors for both business and leisure as well as domestic and international purposes

- The Port has started a multi-year process which may result in a project to modernize existing terminals, replace the ticketing and baggage claim area at Terminal 1, and increase the number of boarding gates in an adjacent facility

The Port of Oakland supports more than 84,000 jobs in the region.

Port of Oakland Maritime Director Bryan Brandes gave a specific example, “There are thousands of jobs tied into the supply chain at the Port of Oakland.” Mr. Brandes listed ship pilots, tugboat operators, dockworkers, mechanics, truckers and warehouse workers. “We’re looking for increased growth in all of these job categories and... new categories in clean equipment technology and in the digital, technical infrastructure...to improve the Port for our users.”

Executive Director Wan said the Port, along with its business partners produce an annual economic impact of about \$130 billion. “We are a job-generating engine; we are providing services to both passengers and cargo and all the goods...you use; so, support us and we’ll support you,” said Mr. Wan.

Cluver, from page 1

another year as President,” Mr. Cluver said. “We’ve got lots of unfinished business and I’m fortunate to be working with the Board and a talented Port of Oakland staff.”

Mr. Cluver, Secretary-Treasurer of the Building & Construction Trades Council of Alameda County, joined the Board in February 2016. In his first term as President, he provided policy guidance as the Port began its recovery from the coronavirus pandemic. Highlights of his tenure have included:

- A record-breaking containerized cargo surge at the Oakland Seaport;

- Reopening of domestic air routes at Oakland International Airport following the prolonged COVID-19 lockdown; and
- Full-scale exploration of future Airport modernization including the possibility of adding a new passenger terminal.

The Oakland Board of Port Commissioners provides policy direction and oversight to the Port’s Executive Director and staff. Oakland City Council members appoint Commissioners based on nominations from the Mayor of Oakland.

Emissions, from page 2

Port of Oakland's Seaport Air Quality 2020 and Beyond Plan.

"We're grateful to the California Air Resources Board for funding electric drayage trucks at the Oakland Seaport," said Port of Oakland Director of Environmental Programs and Planning Richard Sinkoff. "Demonstration projects help us toward our goal of a zero-emissions seaport."

This battery electric truck demonstration project is expected to reduce greenhouse gas emissions. It expands options for another clean, cargo-handling technology at California ports.

The vehicles' trips will be within the Port of Oakland. The data collected will include emissions reductions measurements. The trucks will also be monitored for how effectively they run when hauling fully loaded containers.

Currently, 17 battery electric trucks are in operation at the Port of Oakland. Presently, use of these drayage trucks are limited to short distances and lighter cargo loads because of range and highway weight limitations.

Industry resource links:

[Oakland Portal](#)

[Oakland Seaport Map](#)

[Ocean Carrier Services](#)

[Shipping Forms & Permits](#)

[Shore Power & Vessel Commissioning](#)

[Trucker Resources](#)

[TWIC](#)

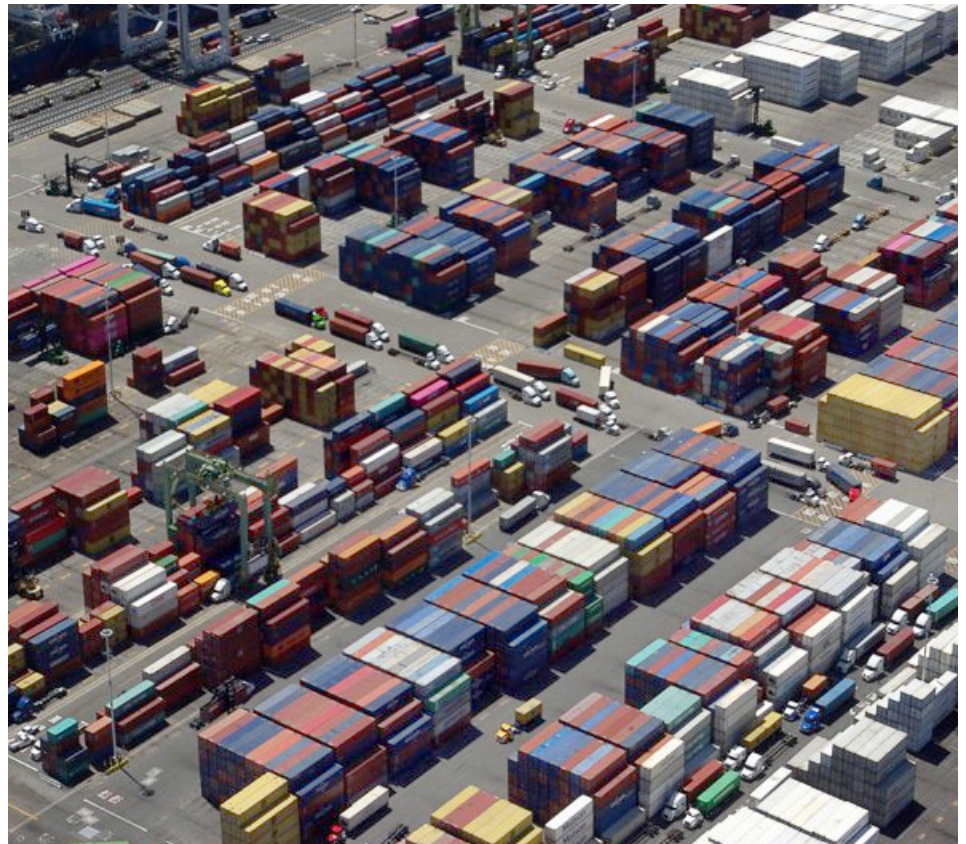
[Maritime Service Directory](#)

Cargo volume up, from page 1

- The upcoming August-November peak season when retailers and distributors stock up for holiday merchandising.

According to the Port, containerized import volume in Oakland has increased year-over-year for five consecutive months. Oakland reported that June 2021 imports were up 15 percent compared to the same period last year and exports edged up 0.8 percent.

Ports nationwide have reported difficulty keeping up with the unprecedented cargo surge. On average, vessels are loading and unloading 66 percent more cargo in Oakland than they did last year. One consequence has been cargo delivery delays. Oakland said it expects delays to ease by late summer with the addition of more dockworkers.



It's your turn

Free COVID vaccinations update

From the California Department of Public Health website: "The vaccine is free to all. No insurance required. Safe, free, effective COVID-19 vaccines are available to everyone age 12 and up—regardless of immigration or insurance status. Stay healthy, protect others and help us end the pandemic. Find a walk-in clinic or make an appointment today." Click on the links below for more information.

My Turn California Clinic location Site:

<https://myturn.ca.gov/clinic.html>

Alameda County Residents:

<https://my.primary.health/r/alco-vax-signup>

Contra Costa County Residents:

<https://covidvaccine.cchealth.org/COVIDVaccine/>

